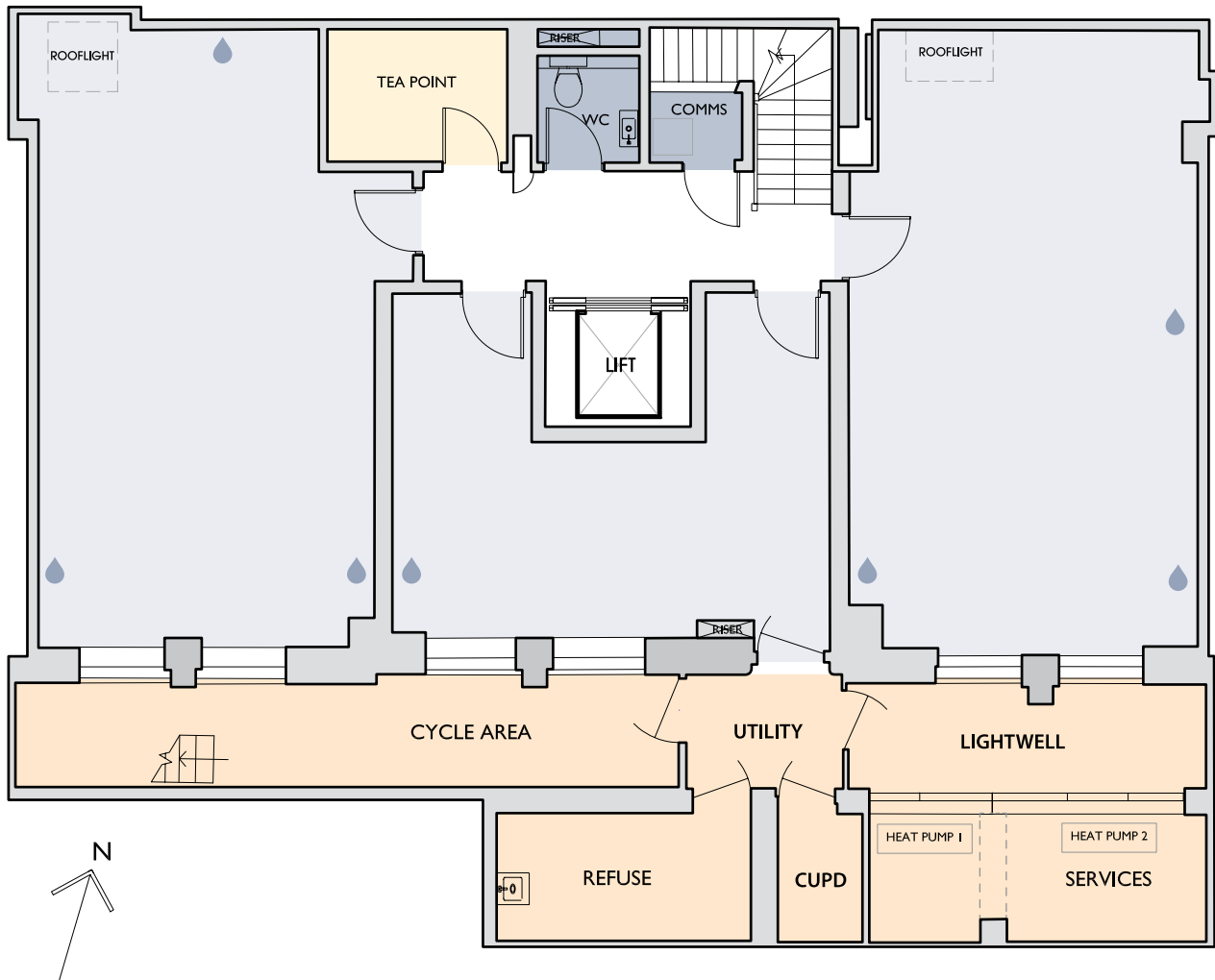


55 NEW CAVENDISH STREET LONDON W1

LOWER GROUND FLOOR : 1,108 SQ FT / 103 SQ M

NOTE: all areas are approximate and will be verified on completion in accordance with rics Code of Measuring Practice.

💧 CAPPED OFF WATER, DRAINAGE AND ELECTRICITY FOR HAND BASINS



NEW CAVENDISH STREET

Claire Kennedy
m: 07970 034 238
t: 020 7290 0970
claire.kennedy@hdwe.co.uk

Emma Fayers
m: 07703 728 434
t: 020 7290 0970
emma.fayers@hdwe.co.uk

Sarah Walsh
m: 07747 488 780
t: 020 7290 0970
sarah.walsh@hdwe.co.uk

**THE
HOWARD
deWALDEN
ESTATE**



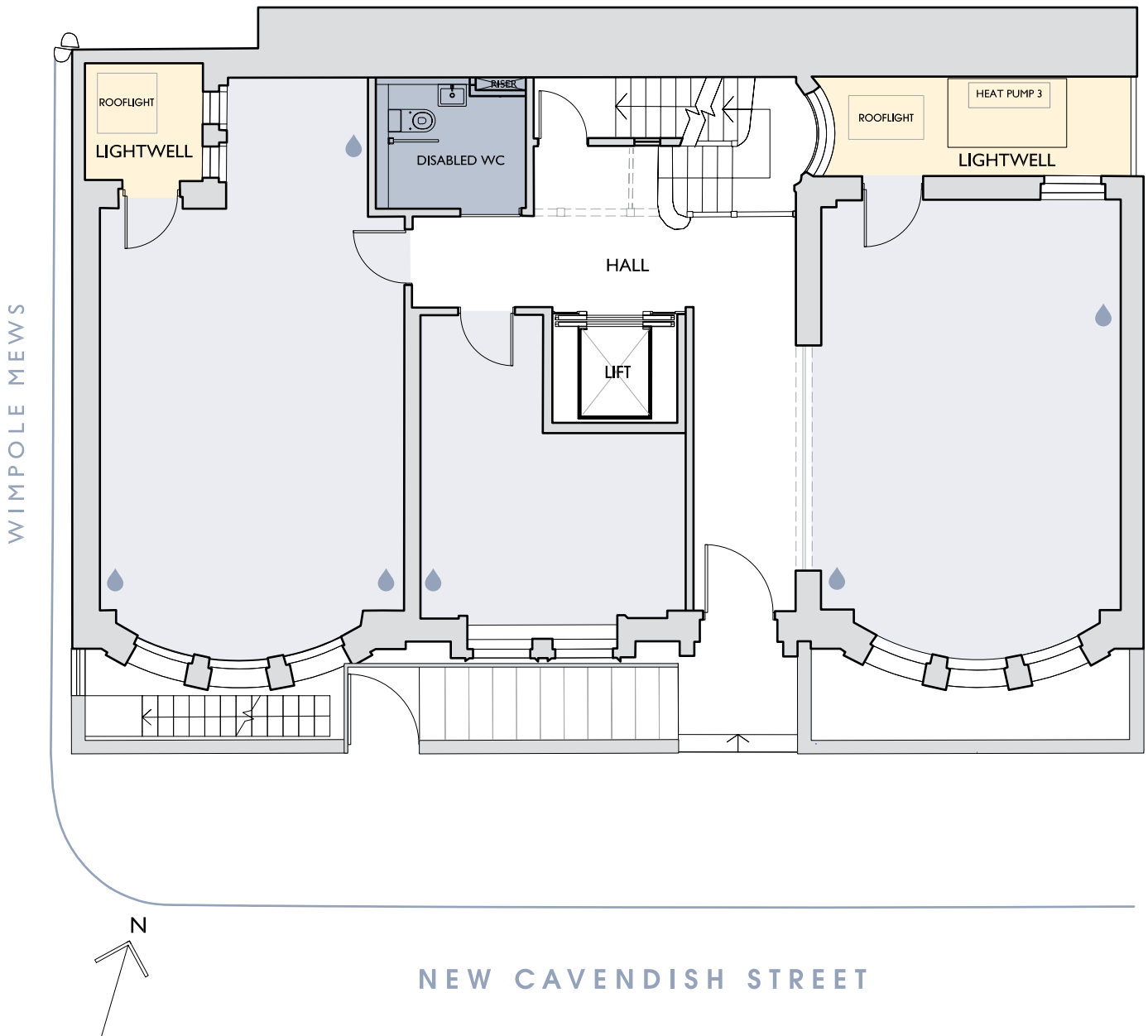
www.hdwe.co.uk

55 NEW CAVENDISH STREET LONDON W1

GROUND FLOOR : 919 SQ FT / 85 SQ M

NOTE: all areas are approximate and will be verified on completion in accordance with rics Code of Measuring Practice.

💧 CAPPED OFF WATER, DRAINAGE AND ELECTRICITY FOR HAND BASINS



Claire Kennedy
m: 07970 034 238
t: 020 7290 0970
claire.kennedy@hdwe.co.uk

Emma Fayers
m: 07703 728 434
t: 020 7290 0970
emma.fayers@hdwe.co.uk

Sarah Walsh
m: 07747 488 780
t: 020 7290 0970
sarah.walsh@hdwe.co.uk

**THE HOWARD
deWALDEN
ESTATE**



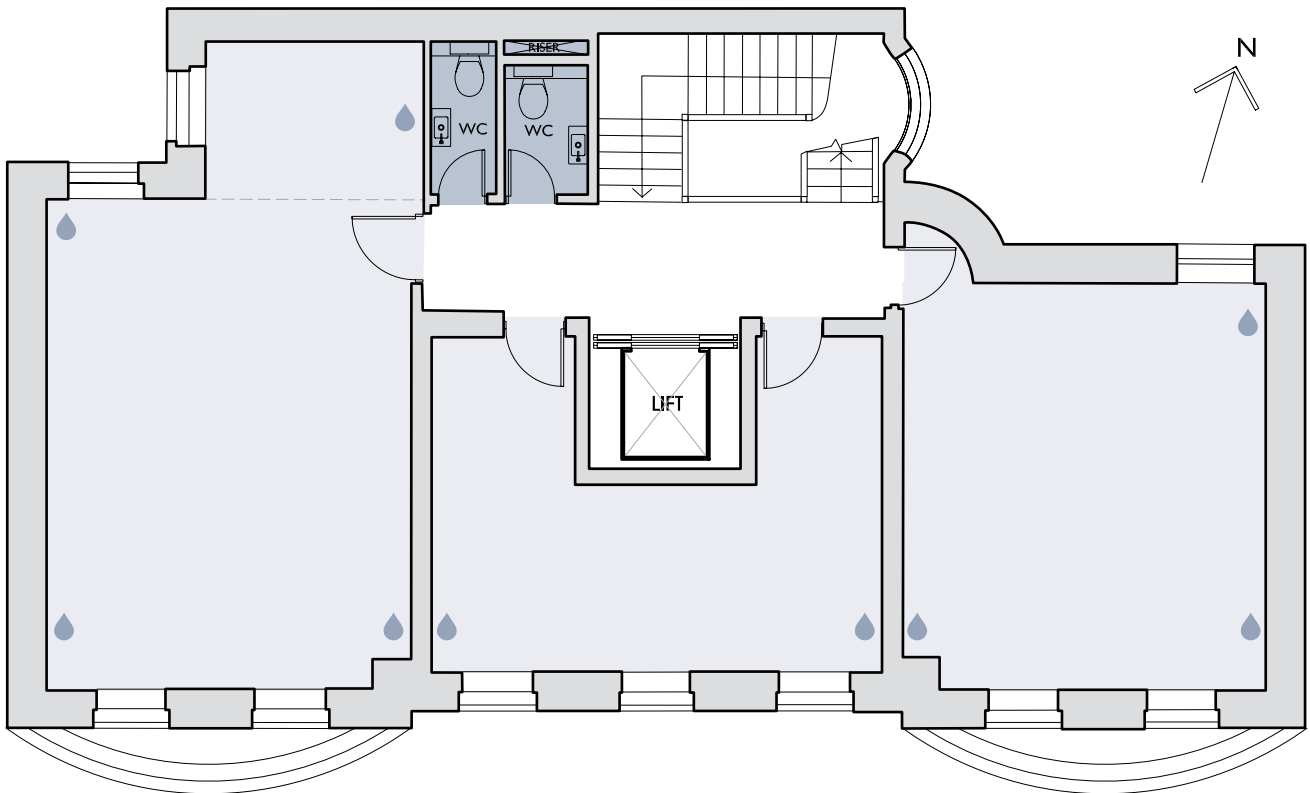
www.hdwe.co.uk

55 NEW CAVENDISH STREET LONDON W1

FIRST FLOOR : 927 SQ FT / 86 SQ M

NOTE: all areas are approximate and will be verified on completion in accordance with rics Code of Measuring Practice.

💧 CAPPED OFF WATER, DRAINAGE AND ELECTRICITY FOR HAND BASINS



NEW CAVENDISH STREET

Claire Kennedy
m: 07970 034 238
t: 020 7290 0970
claire.kennedy@hdwe.co.uk

Emma Fayers
m: 07703 728 434
t: 020 7290 0970
emma.fayers@hdwe.co.uk

Sarah Walsh
m: 07747 488 780
t: 020 7290 0970
sarah.walsh@hdwe.co.uk

**THE
HOWARD
deWALDEN
ESTATE**

www.hdwe.co.uk

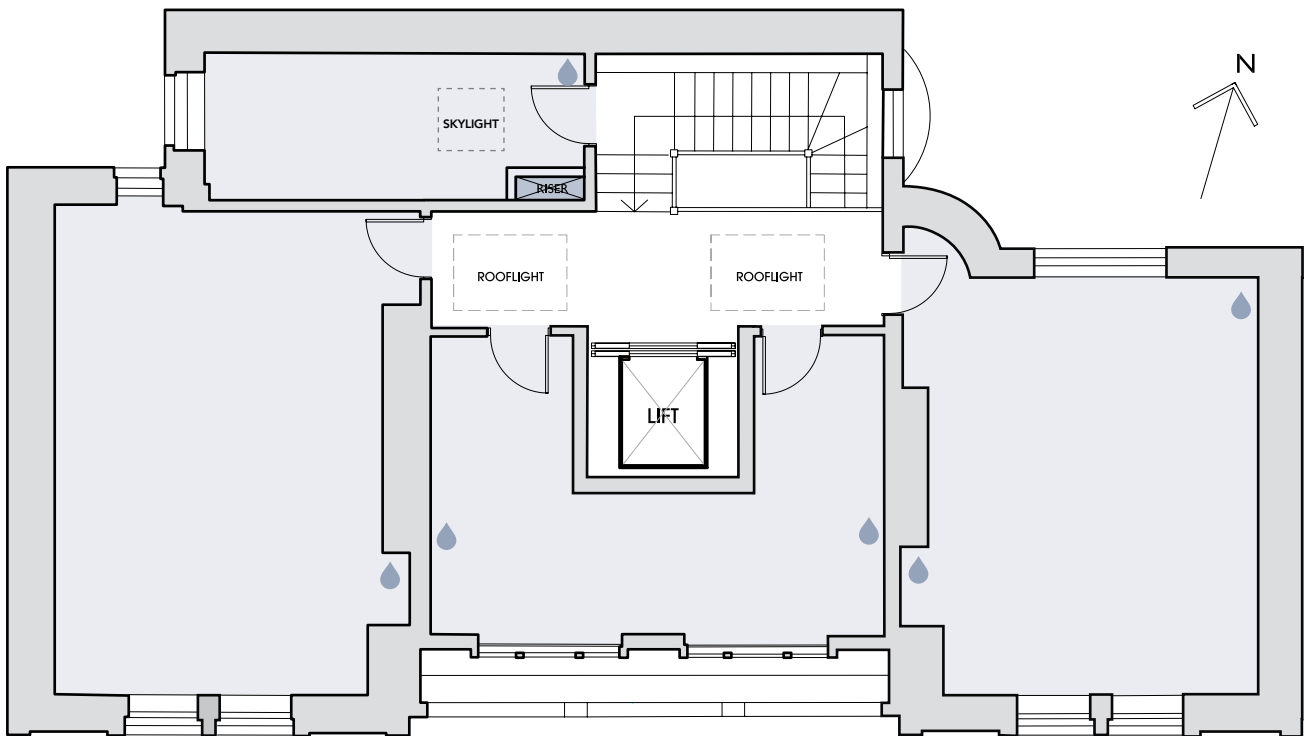


55 NEW CAVENDISH STREET LONDON W1

SECOND FLOOR : 849 SQ FT / 79 SQ M

NOTE: all areas are approximate and will be verified on completion in accordance with rics Code of Measuring Practice.

💧 CAPPED OFF WATER, DRAINAGE AND ELECTRICITY FOR HAND BASINS



NEW CAVENDISH STREET

Claire Kennedy
m: 07970 034 238
t: 020 7290 0970
claire.kennedy@hdwe.co.uk

Emma Fayers
m: 07703 728 434
t: 020 7290 0970
emma.fayers@hdwe.co.uk

Sarah Walsh
m: 07747 488 780
t: 020 7290 0970
sarah.walsh@hdwe.co.uk

**THE
HOWARD
deWALDEN
ESTATE**

www.hdwe.co.uk

